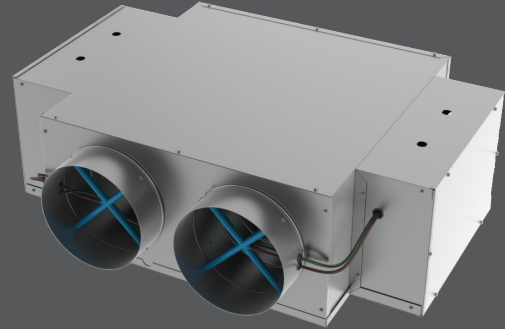


## EDV / EDC

- Standard AeroCross™ multi-point center averaging velocity sensors in four location combinations to match any control requirement
- Standard matte faced insulation for maximum thermal and acoustic performance
- Mechanically sealed and gasketed, leak resistant construction
- Choice of right or left hand cold duct location; right hand is standard
- Standard 22 gauge casing with slip and drive discharge connection
- Controls supplied by Titus are factory calibrated for quicker start-up



EDV / EDC

## AVAILABLE MODELS:

PEDV / Pneumatic  
PEDC / Pneumatic  
DEDV / Digital Electronic

## OVERVIEW

For Blending or Non-Blending Applications

Titus Dual Duct terminals vary the airflow individually between hot and cold inlets for highly accurate temperature control. Dual duct systems are an ideal vehicle for alternative ventilation strategies and humidity control. Additionally, total filtration of all air delivered to the zone is possible. Titus dual duct terminals provide high performance and value, making them the preferred selection for these applications.

## ADDITIONAL FEATURES

- Direct digital control package supplied by Titus includes: direct digital controller, damper actuators and flow transducers
- Dual density insulation, coated to prevent air erosion, meet requirements of NFPA 90A and UL 181



See website for Specifications